

Ngā momo wai

Types of water

ua
rain



Ngā Roimata o Ranginui
Tears of the sky father

Wai-ora

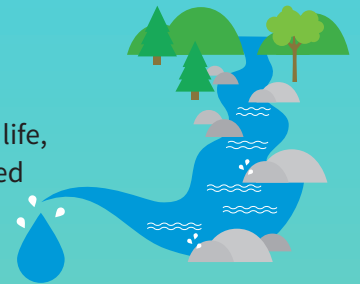
pure / healthy water



This is water in its purest form. It contains the source of life and wellbeing.

fresh water

Water that is used for consumption, sustains life, runs free or unrestrained and has no sacred associations.



Wai-kino

dangerous / polluted water



The mauri (life force) of the water has been altered through pollution and has the potential to do harm to all living things (incl humans and ecosystems). Also refers to dangerous water such as rapids.

dead water

Water that is no longer able to sustain life. It is dangerous to all living things (incl humans and ecosystems) because it can cause illness or misfortune.



Wai-tai

seawater / salt water



This term also refers to rough or angry water as in surf, waves or sea tides.

sacred water

This is water that is used for ritual and ceremony.



Ngā puna wai (tapu) o Papatūānuku
The weeping springs of the earth mother



Te Wiki o te reo Māori

Māori Language Week

10 – 16 o Mahuru (September) 2018

