

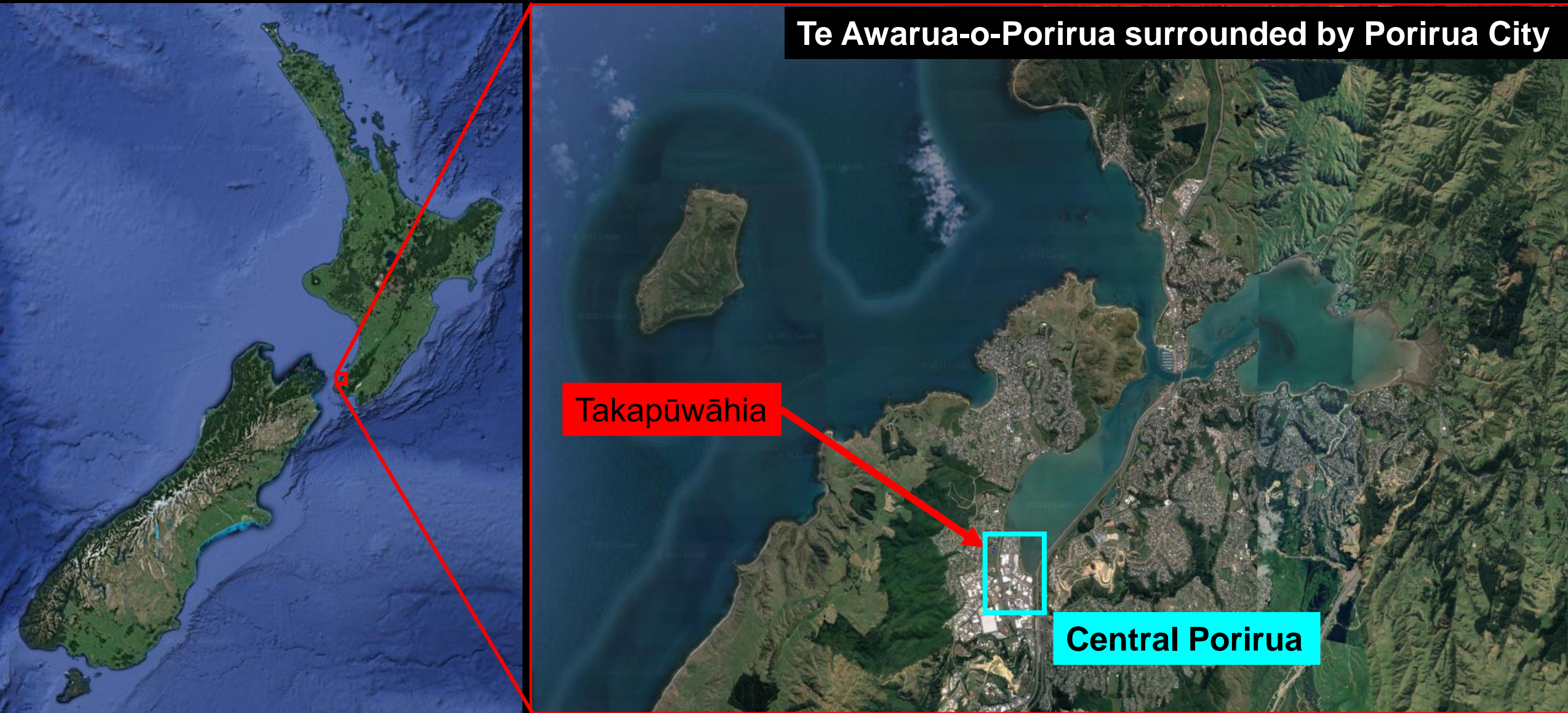


**Kat Dever-Tod**  
Water Engineer

# **REVERSING RECLAMATION TO ENHANCE TE AWARUA-O-PORIRUA AND RESTORE RESILIENCE TO ITS COMMUNITIES**

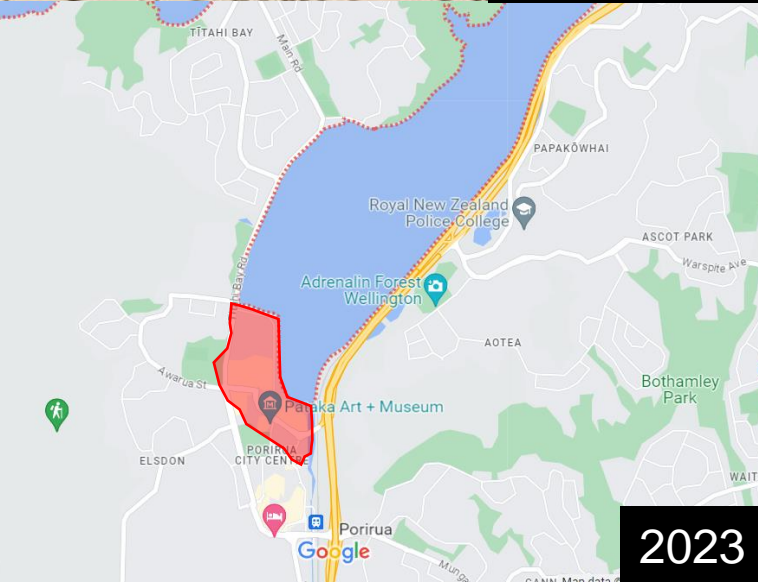
***Solution = a means of solving  
a problem***

# Central Porirua





# The root of the problem



## High bacteria levels at Te Awarua-o-Porirua Harbour's

## Signs of life in Porirua Harbour threatened by pollution and sediment

May 31, 2022 2 comments

"We are dealing with 150 years of neglect and abuse of the harbour," Anita said. "That includes long-term under-investment in wastewater and stormwater systems common to most councils in New Zealand," Baker said.



# The problem - catalyst for change

- ✚ Severe flooding in 2015 and 2016
- ✚ Homes, social services, schools and businesses affected
- ✚ Network capacity issues, insufficient flood protection for properties



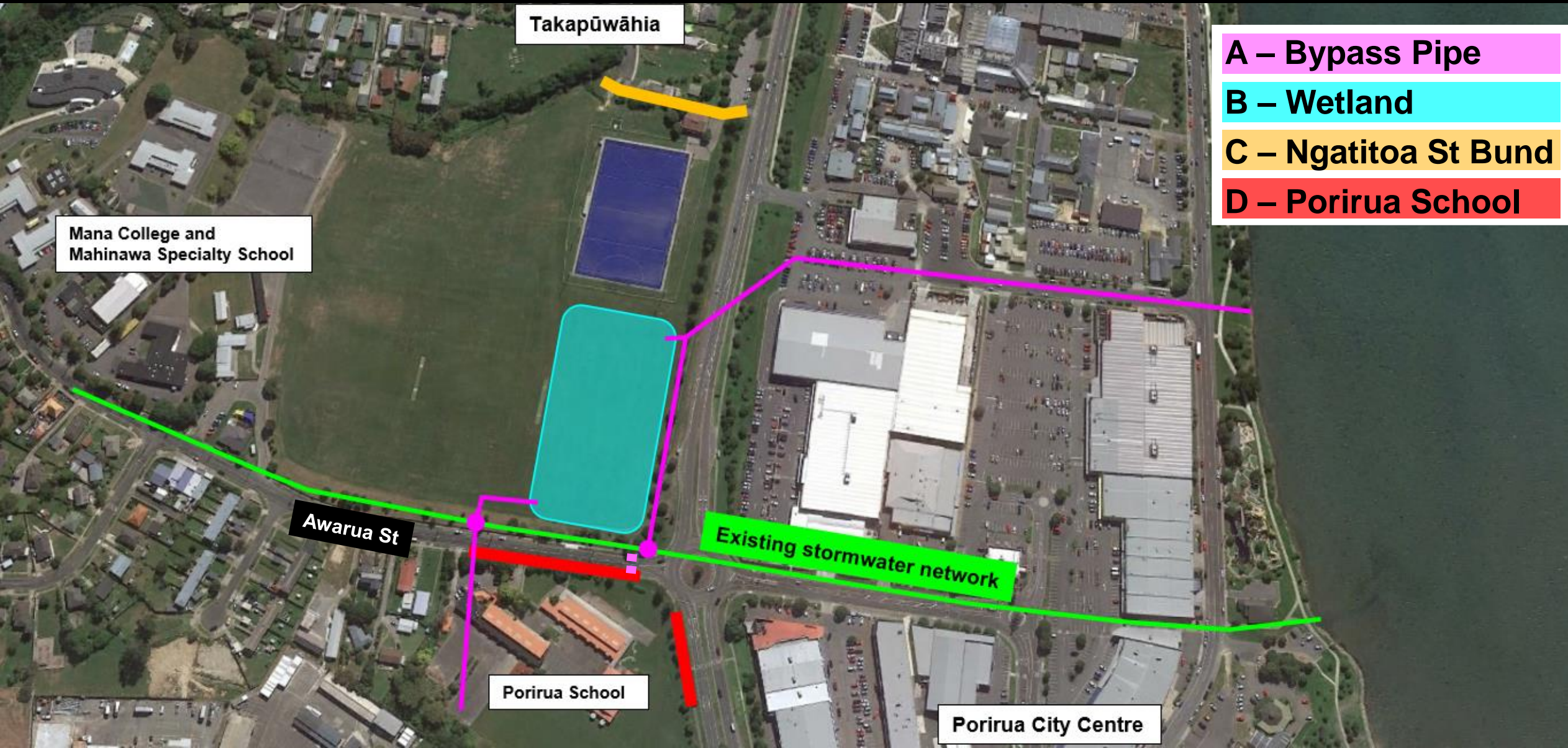


# → PCC Central Stormwater Upgrades – Stage 1





# PCC Central Stormwater Upgrades – Stage 1



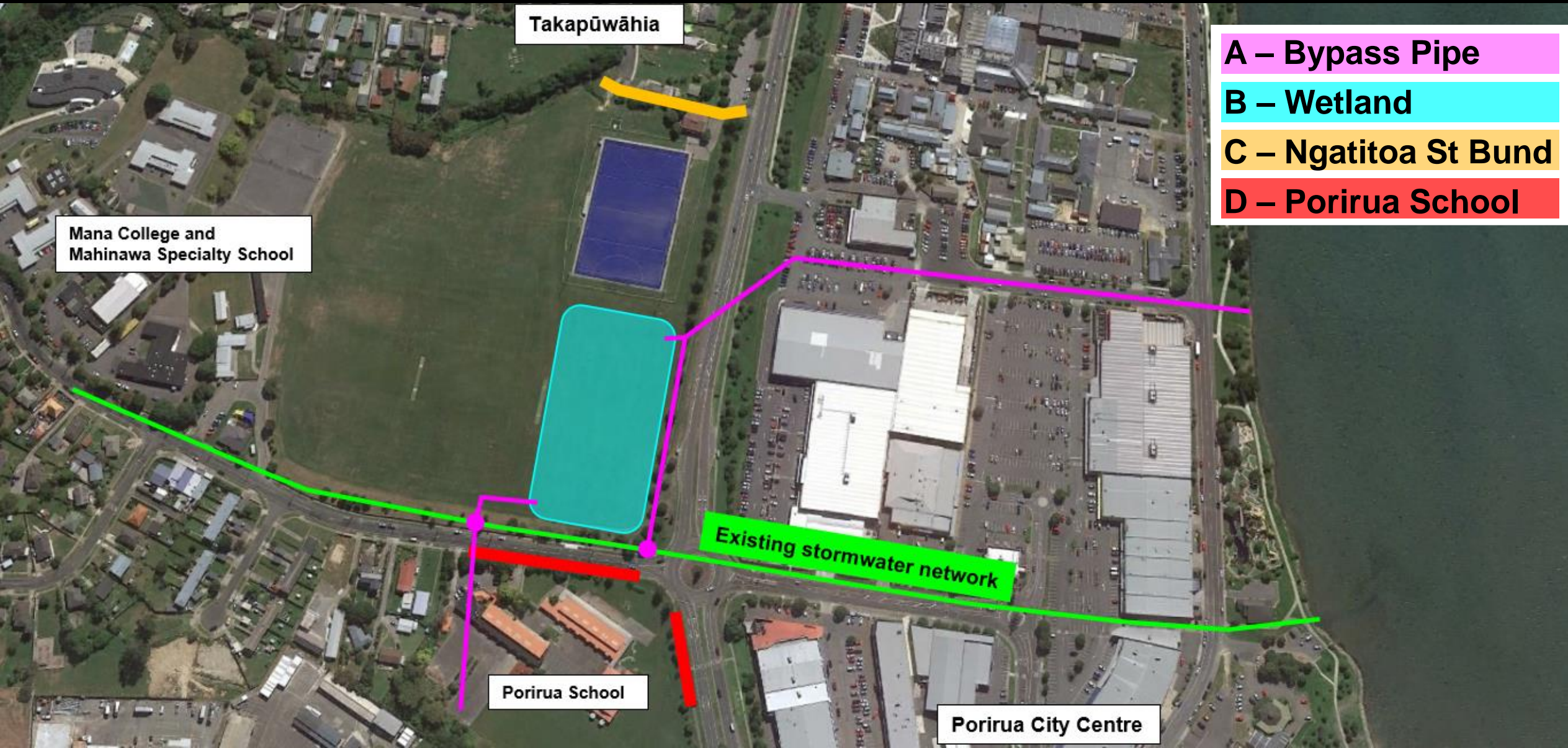


# PCC Central Stormwater Upgrades – Stage 1





# PCC Central Stormwater Upgrades – Stage 1





# Ngatitoa St bund



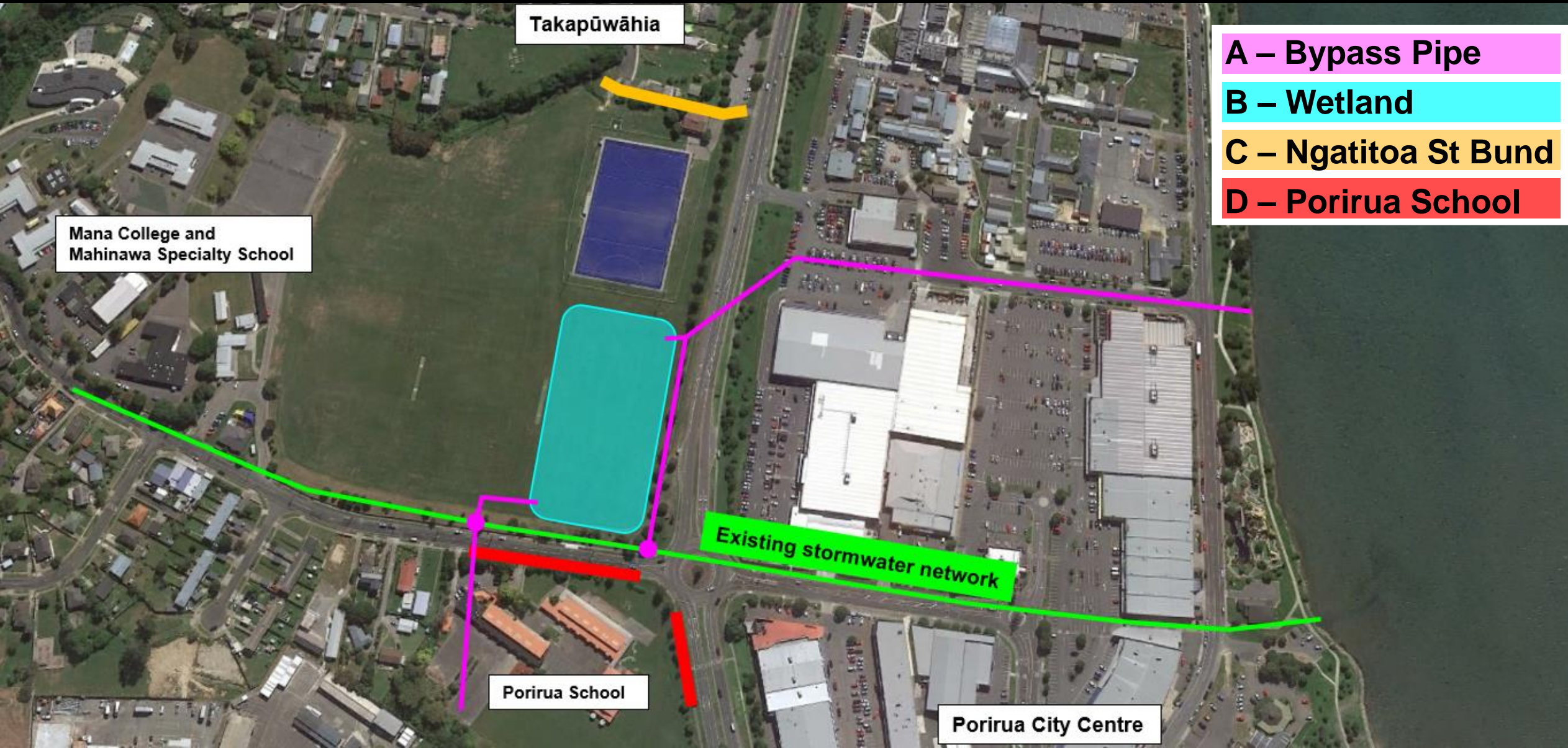
July 2021 (before wetland construction)



Ngatitoa St properties



# PCC Central Stormwater Upgrades – Stage 1





# PCC Central Stormwater Upgrades – Stage 1



Te Kukuwai o Toa



# Design consultation



**Local stakeholders  
engaged to optimise  
design**





# Community outcomes

- + Kura (schools), social services and businesses no longer disrupted**
- + Urban recreational space enabling connection with nature, significant increase in use**
- + Enhanced ecological aspects**
- + Improving all 'four well-beings' of the area - social, economic, environmental, and cultural**
- + Outdoor classroom**





**Don't just solve the problem...**

**Find the BEST solution that will add  
the most value for the community**





# Thank You

## **PCC Central SW Upgrades – Stage 1 Project**

**Client:** Wellington Water Limited (on behalf of Porirua City Council)

**Project managers/flood designers:** GHD Ltd

**Wetland design:** Morphem Environmental Ltd

**Contractors:** E Carson & Sons