

# Stormwater Compliance *During Construction*

## Why is it important?

Adam Duncan

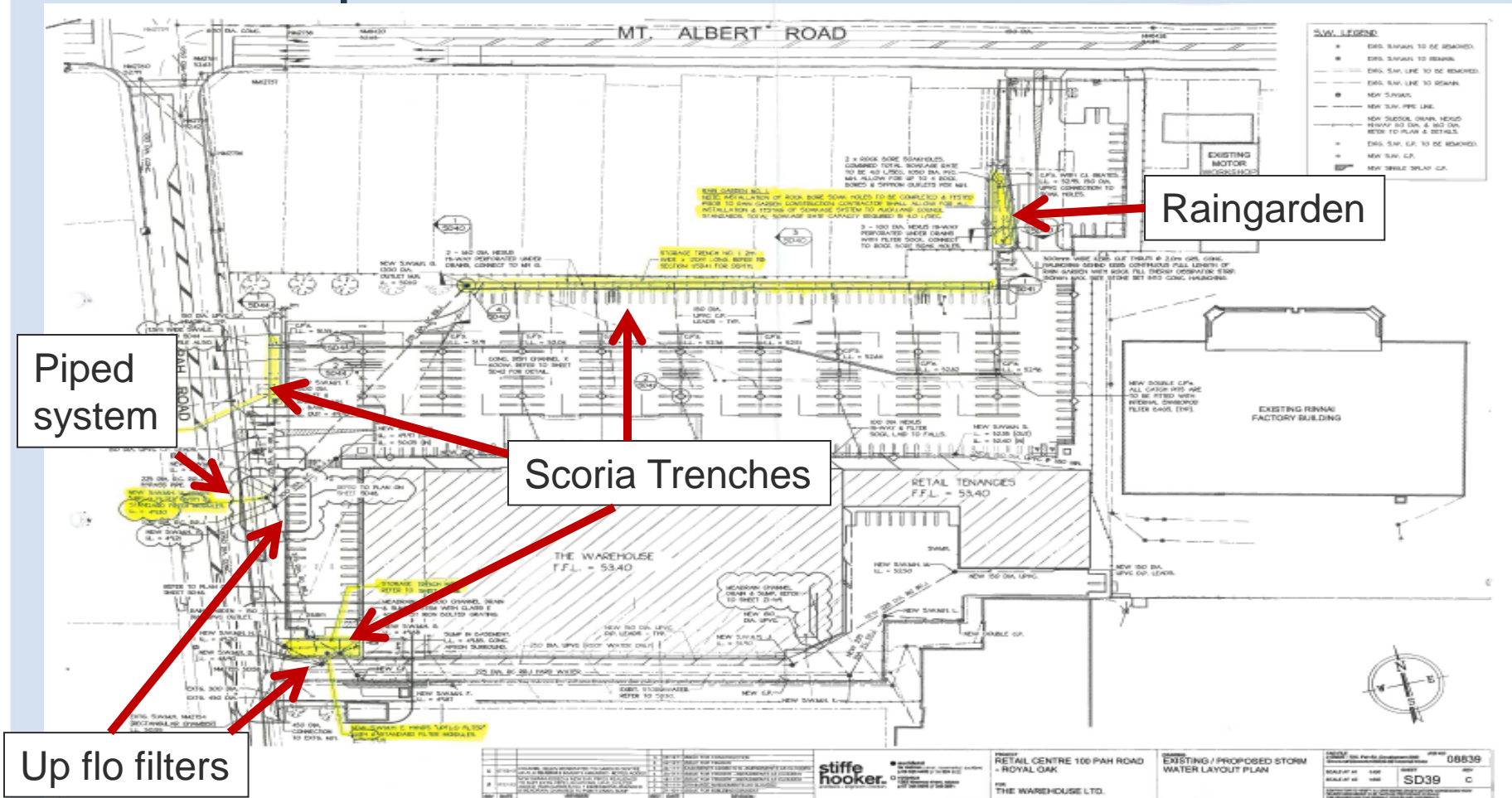
Senior Compliance Advisor – Stormwater & ITP  
Natural Resources & Specialist Input  
Resource Consents

27 June 2012

# Topics

- The Warehouse site
- Pre construction meeting
- Conditions
- Site controls
- Brief look at rain gardens
- Post construction meeting
- Factsheets

# SW site plan

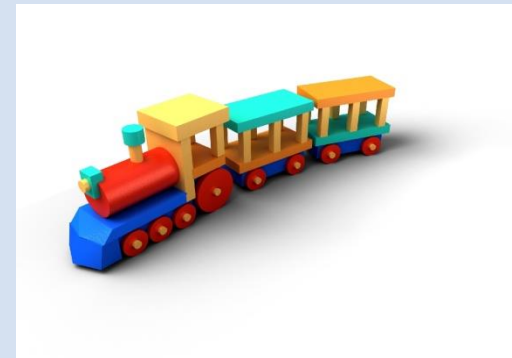


# Key aspects

- Approx 2,728 sq m new impervious area
- Flat site
- Land use consent – District Plan
- SW Consent – Regional Plan
- Interaction
- **Communication**

# Stormwater devices

- Treatment train approach
- Catch pit filter bags
- Rain gardens
- Scoria detention trench
- Up-flo Filters
- Piped to reticulated system



# Key consent conditions during construction

- Pre construction
- Post construction
- As-builts





# Warehouse site





# Stormwater devices – Warehouse site





# Site controls





# Catch pit protection



# Erosion & Sediment Controls

- Catchpit protection – filter cloth
- Filter cloth covering all exposed sediment
- Stockpiling in centre of the site (flat) to prevent movement off site
- Construction traffic managed through specific areas, reducing tracking onto road
- Filter cartridges being installed after construction completed
- Continual **communication** with Auckland Council



# Rain garden construction



Next:  
approved media mix





# Rain gardens





# Pitfalls of Premature Post Construction Meetings



# Website / Factsheets

- Stormwater
- <http://www.aucklandcouncil.govt.nz/EN/environmentwaste/stormwater/Pages/home.aspx>
- Maintenance guides
- <http://www.aucklandcouncil.govt.nz/EN/environmentwaste/stormwater/Pages/home.aspx#maintenanceguides>
- Construction best management practices
- <http://www.aucklandcouncil.govt.nz/EN/environmentwaste/stormwater/Pages/home.aspx#bmp>

If complying with resource consent conditions is given the priority that is required, then to quote Auckland Mayor Len Brown:

***“We will be able to make Auckland the world’s most liveable city.”***

Thank you for listening and we hope you have gained some valuable insights.