

Kia ora

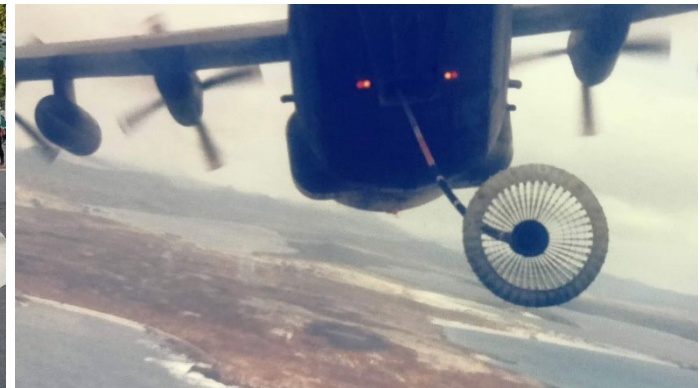
Jon Lamonte - Chief Executive

Wai Tāmaki ki Te Hiku (Northland & Auckland Water Services Entity)



water
NEW ZEALAND
CONFERENCE & EXPO
17-19 OCTOBER 2023
Tākina, Te Whanganui-a-Tara Wellington

My journey to New Zealand

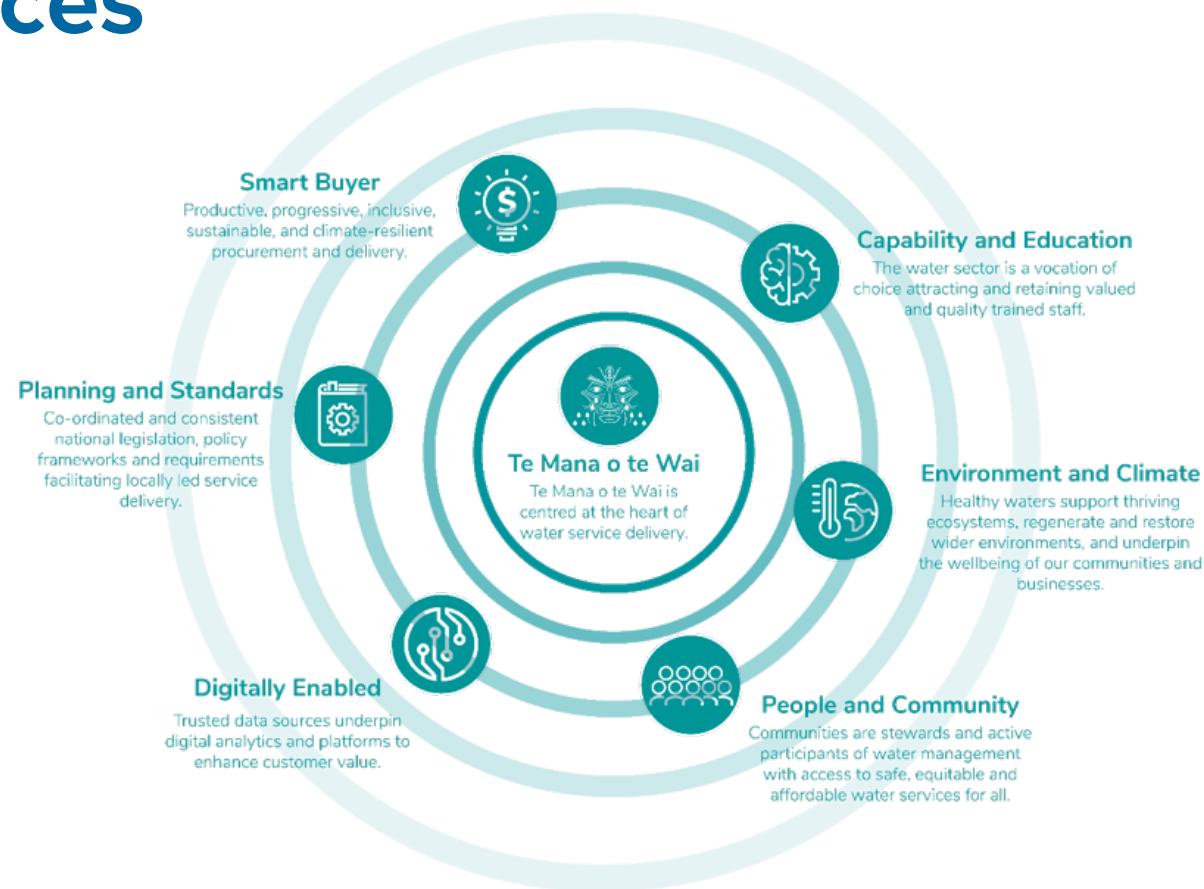


My time in Aotearoa



Aspirations in water services

- A uniquely Aotearoa - New Zealand based approach to building a world-class water system.
- Changes that enable the significant investment required in water infrastructure, which is out-of-reach of individual councils alone.
- Conditions to build and sustain a highly skilled and adaptable water workforce that can innovate and collaborate to drive better outcomes for New Zealand.
- A customer-focused approach, leveraging new technologies, whilst also building community awareness of their role in the water system and the value of water.



Wai Tāmaki ki Te Hiku

Service Area

- 17,449 km²
- Around 1.9 million people (37% of the nation)
- About 708,000 residential properties
 - 80% have a water supply
 - 89% have a wastewater service
 - 88% have access to a stormwater service
- 31 iwi and representative organisations
- Approximately 200+ hapū across the Tai Tokerau

Merging water services from five organisations

Far North District Council, Whangārei District Council, Kaipara District Council, Auckland Council, Watercare

Workforce

- Around 1850 FTEs delivering or supporting water services

Assets

- 11,000 km water supply pipes
- 10,000 km wastewater pipes
- 8,500 km stormwater pipes, 47 km open channels
- 39 WTP, 49 WWTP
- About 1,000 pump stations across water, wastewater and stormwater



Omanaia River



Video - Omanaia River



Video – Relationships with water



Te Wai Ariki



Video – Te Wai Ariki



Think different, act different, do differently

- We need to focus on realigning the relationship between people and water in all its forms to ensure the wellbeing of our waters.
- We need to ensure the health and well-being of water bodies and freshwater ecosystems.
- As this will affect the health needs of people (such as safe and healthy drinking water).
- And enable people and communities to provide for their social, economic and cultural well-being, now and in the future.
- We need a shared vision of where the future takes us with water in New Zealand



An opportunity for change





Thank you

Jon Lamonte

Wai Tāmaki ki Te Hiku (Northland & Auckland Water Services Entity)