



# TELECOMMUNICATIONS IN 2024



# NZ Telecommunications Forum (TCF)

---

- Who we are, what we do
- Telecommunications in 2024
- Fibre, Wireless & Satellite
- The 3G shut down
- Resilience in Aotearoa





# Who we are, what we do

---

Industry body for the NZ telecommunications sector.

Key functions include:

- Code Development
- Block listing
- Number Porting
- Consumer protection & education
- Mobile phone recycling



# Members



AWACS

CHORUS

CONNEXA

devoli

ELECTRIC  
KIWI

enable  
fibre broadband

Fortysouth™

HOURLUA

kordia

Mercury

Northpower FIBRE

now.

one.nz

Spark™

symbio™

Tuatahi  
First Fibre

unisonfibre  
Connecting People and Business

vector  
fibre

WISPA™

# Industry Snapshot



**87%** of Kiwis can connect to fibre

1.8 million homes and businesses with access, an uptake rate of 70%.



**616 MARAE** now connected to fibre



**14% increase** in wireless broadband uptake

To 315,000 connections, the fourth-highest level of wireless broadband uptake per capita in the OECD.



**450** RCG cell towers

As of June 2023, with an additional 25 tourism sites and 182km of stat. highway gaining mobile coverage.



**Ranked 4th** in the OECD

For average 5G download speeds of 256.7Mbps.



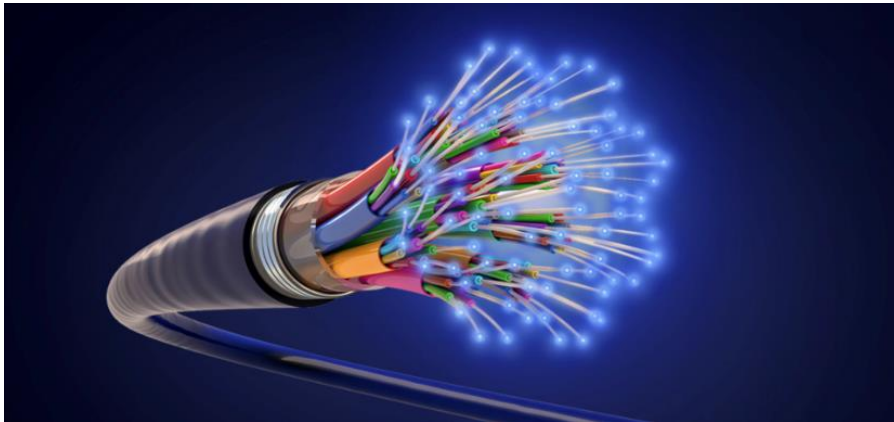
**Ranked 6th** in the OECD

In the mobile connectivity index for the 4th year running.



**Ranked 9th** in the world

For average broadband download speed - at 94Mbps. An 8Mbps increase in the last year - ahead of Australia, Ireland, the UK and Germany.



# Fibre

Newer and more robust technology replacing traditional copper lines.

Transforms the way Kiwis live and connect to the online world.

- Blazing-fast speeds
- superior reliability
- lower latency

Delivering broadband speeds much faster and with more consistent performance.





# Mobile Technologies

## EXPANSION OF CONNECTIVITY



**78,708 RURAL HOMES AND BUSINESSES** can access improved broadband — 93% complete



**1,228 KM OF STATE HIGHWAY** have mobile coverage — 87% complete



**24,793 HOMES AND BUSINESSES** with broadband capacity upgrades — 35% complete



**98% OF THE POPULATION** has mobile network coverage across 3G, 4G and 5G



**Total \$2.1 billion invested** (project to date)

- 5G rollout, shutting down of older generation networks
- Re-use of spectrum
- Faster speeds, lower latency
- Lower power use





# Wireless & Satellite

---

Developments in ability to provide mobile coverage in more remote areas, aiming to ensure no Kiwi is left disconnected.

Fixed-wireless broadband utilises the existing mobile network infrastructure to provide internet access.

Satellite technology offers a cost-effective solution, providing high-speed internet access to rural communities and underserved regions.





# The 3G shut down

---

3G networks being shut down over the next 12-18 months to free up spectrum for superior next generation 4G and 5G technology.

3G reliant devices from phones to vehicle trackers and burglar alarms will no longer work after the shut down, so now is the time to check if your devices are already compatible,

Mobile network operators will be contacting those who are affected.

There is plenty of time still to upgrade your 3G devices.





# Resilience

---

- Weather events & natural hazards
  - Future planning
  - Essential infrastructure
- 

# TEF Activation

Working party made up of the key network operators, retailers and other telco organisations that might be affected by any given emergency event.

Feed information into the National Emergency Management Agency (NEMA)

Established by the telecommunications sector to ensure effective management of emergencies that impact national and regional telecommunications;





Image 1 of 43: A truck has been left overwhelmed in debris on SH1 between Roper and Watika. Photo / Gabriel



Gabrielle damage eats up all year's lines repair budget | BusinessDesk

Images may be subject to copyright. [Learn More](#)



# SCADA







Thank you

**Paul Brislen**

**Telco Forum CEO**

021 9888 96

[Paul.brislen@tcf.org.nz](mailto:Paul.brislen@tcf.org.nz)